

# AquaShield

## Bench Scale

Waterproof  
Accurate  
Versatile

The AquaShield Bench Scale is specifically designed for use within weighing environments where washdown is a priority. With a ridged frame and hardware made of 304 SAE stainless steel, FDA compliant feet and Aqueduct Drainage System (ADS), the AquaShield is resistant to water and rust allowing it to be washed down as needed.



Bench Scale Complete

Aquashield	Aquashield MAX
Equipped with IP65 load cell	Equipped with IP69K load cell



Bench Scale

### Aqueduct Drainage System

Provides an unimpeded path for water evacuation, preventing accumulation of liquid and material build-up

### FDA Compliant Feet

Approved for use in the food industry

### Versatility

Available in three sizes and five capacities with batching and counting capabilities

### Stainless Steel Construction

Insure longevity and prevent rust

### IP65 and IP69K Ratings

Submersible water resistance and high pressure spray

### Optional Stack Light

Provides easy visual when check weighing or check counting

# AquaShield

## Bench Scale

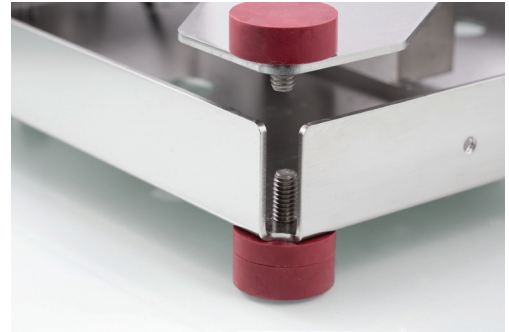
Waterproof  
Accurate  
Versatile

### Features and Specifications

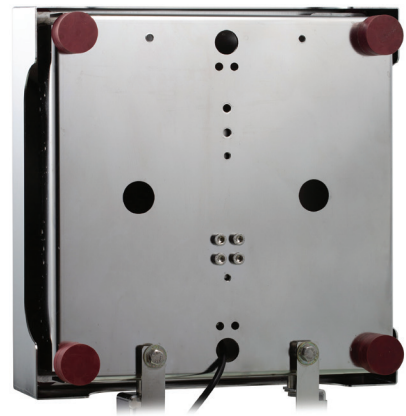
- Certificate of Conformance: 20-042
- Canadian Approval: AM-6145
- Design: Prevents accumulation of liquid / materials
- 
- Type: Single point bench scale
- Scale Capacity: 5, 20, 50, 100 and 200 lb
- Scale Height: 4"
- Available Sizes: 10" x 10", 12" x 12" and 18" x 18"
- Weighbridge: 304 stainless steel heavy duty formed base frame and spider
- Platter: Heavy gauge 304 stainless steel
- Load Cell: IP65 or stainless hermetic IP69K single point (Max version only), 10' cable, FM Approved
- Feet: FDA Compliant
- Applications: General weighing, counting and checkweighing or batching can be configured with the indicator

### Options

- Indicator: T401S IP66 or T403S IP69K
- Load Cell:
  - Aluminum IP65 single point 3 year warranty
  - Stainless Steel Hermetic IP69 single point 1 year warranty
- Stack Light:
  - IP65 Stack Light
  - IP69 Stack Light



FDA compliant feet and quick drain design



PRODUCT PAGE



PRODUCT VIDEO



Optional IP69 Stack Light



Optional IP65 Stack Light